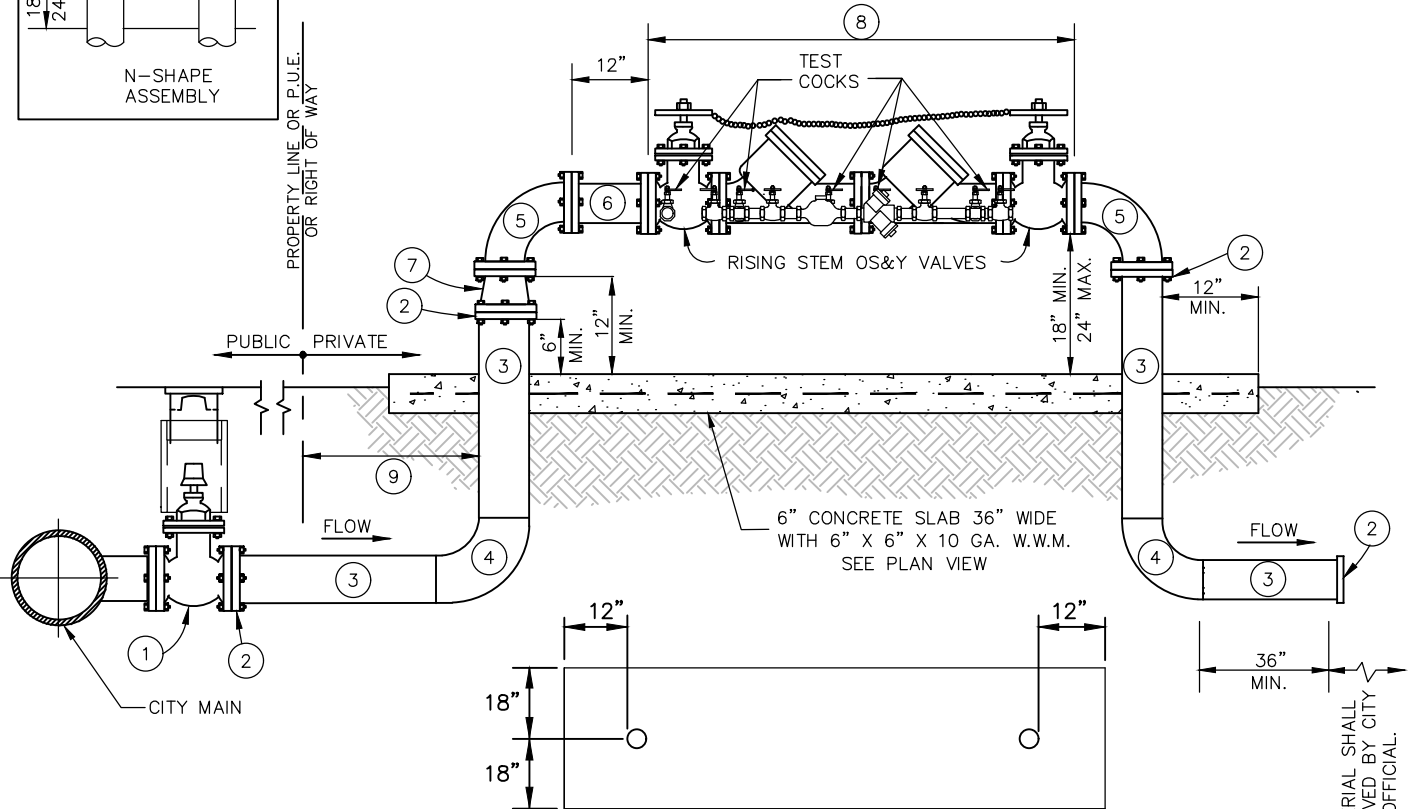
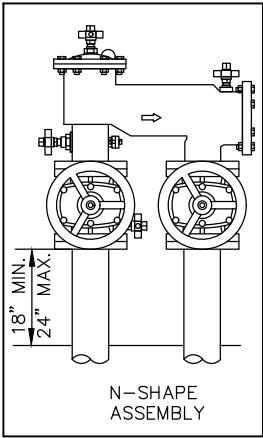


NOTES:

1. ASSEMBLY AND ABOVE GROUND PIPING SHALL BE PAINTED WITH PRIMER AND TWO COATS OF RAL 6009 FIR GREEN.
2. NO CONNECTIONS SHALL BE INSTALLED BETWEEN THE VALVE AND THE ASSEMBLY.
3. A 2' WIDE ACCESS AREA AROUND THE CONCRETE PAD SHALL BE PROVIDED WITH A 2% MAXIMUM GRADE. RETAINING WALL MAY BE REQUIRED BASED ON SITE TOPOGRAPHY AS DETERMINED BY CITY REPRESENTATIVE. IF REQUIRED, RETAINING WALL SHALL BE CONSTRUCTED A MINIMUM OF 3 FT FROM OUTSIDE EDGE OF DCDA PIPING.
4. CONCRETE PAD ELEVATION SHALL BE 1" HIGHER THAN THE ADJACENT CURB OR SIDEWALK, WHICHEVER IS HIGHER.
5. 3/4" DIAMETER CARBON STEEL BOLTS, NUTS, AND WASHERS A.S.T.M. 307, GRADE A OR B, ZINC PLATED SHALL BE USED. ZINC ANODE CAPS REQUIRED.



CONCRETE PAD - PLAN VIEW

CONSTRUCTION NOTES:

- ① 6" MIN. GATE VALVE PER STD. 4005. OTHERWISE VALVE SHALL MATCH LATERAL SIZE.
- ② A.S.A. 150 LB SLIP ON FLANGE (SHIP LOOSE FOR FIELD WELDING).
- ③ FULLY WELDED SCH. 40 CMLC STEEL PIPE.
- ④ FULLY WELDED SCH. 40 CMLC 90° BEND
- ⑤ FLANGED SCH. 40 CMLC 90° BEND
- ⑥ 12" LONG FL X FL DUCTILE IRON OR SCH. 40 CMLC SPOOL
- ⑦ 6"x4" FL X FL SCH. 40 CMLC BELL REDUCER, IF NEEDED.
- ⑧ DOUBLE CHECK DETECTOR ASSEMBLY (DCDA) SHALL BE ON THE LATEST U.S.C. FOUNDATION FOR CROSS CONNECTION CONTROL & HYDRAULIC RESEARCH (F.C.C.C. & H.R.) LIST AND COMPLY WITH THE CALIFORNIA STATE WATER RESOURCES CONTROL BOARD (SWRCB) GUIDELINES.
- ⑨ ASSEMBLY SHALL BE INSTALLED WITH A SEPARATION OF 3' MINIMUM AND 5' MAXIMUM AS MEASURED ALONG THE PIPE FROM THE CONCRETE PAD TO THE PROPERTY LINE OR ADJACENT BACK OF SIDEWALK, WHICHEVER IS CLOSER, TO ALLOW FOR LANDSCAPE SCREENING.

PIPE MATERIAL SHALL BE APPROVED BY CITY BUILDING OFFICIAL.



APPROVED BY:	<i>[Signature]</i>	05/30/2024		
		62809		
KHOI DO, CITY ENGINEER	RCE	DATE		
RECOMMENDED:	<i>[Signature]</i>	5/20/24		
		62268		
DENNIS MEJIA, UTILITIES ENG DIVISION MGR	RCE	DATE		
REV	DESCRIPTION	BY	APP'D	DATE

CITY OF ONTARIO	
FIRE SERVICE W/ DOUBLE CHECK DETECTOR ASSEMBLY	STANDARD DRAWING NUMBER 4208