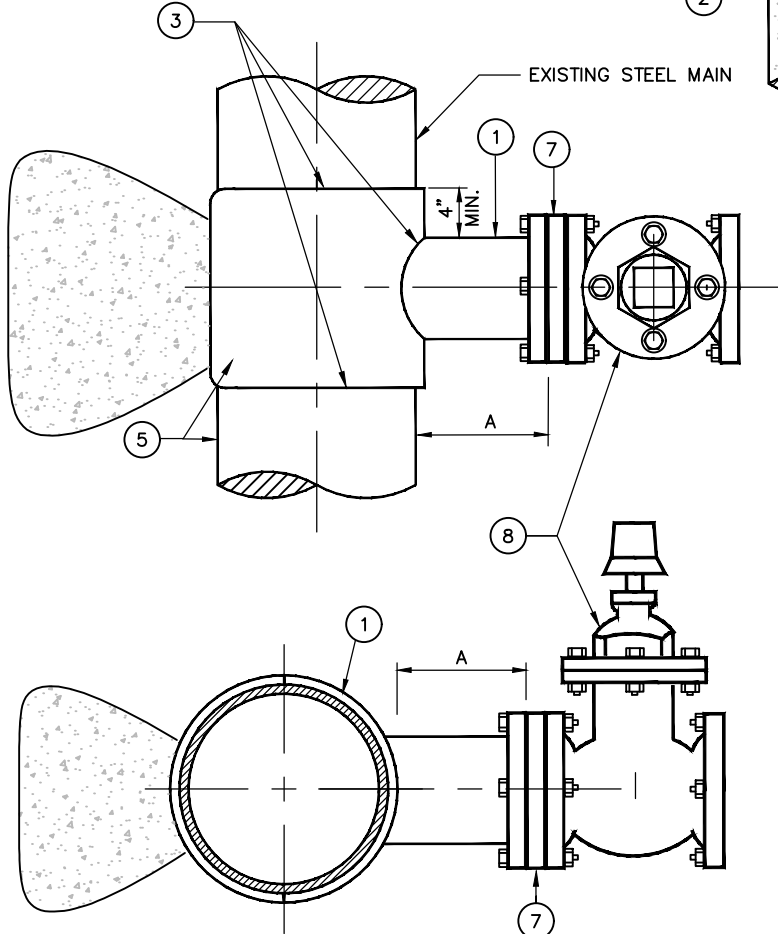


NOZZLE DIMENSIONS	
TAP SIZE	DIMENSION 'A'
4 IN	5 IN
6 IN	6 IN
8 IN	6 3/4 IN
10 IN	7 IN
12 IN	7 1/2 IN



CONSTRUCTION NOTES:

- ① NOZZLE AND FULL WRAPPER TO BE 1/4" MIN. STD. STEEL, CEMENT MORTAR COATED. NOZZLE TO BE CEMENT MORTAR LINED.
- ② MORTAR COATING SHALL BE REMOVED BY GRINDING THEN CHISELING. NO HAMMERING IS ALLOWED.
- ③ FILLET WELD ALL AROUND
- ④ APPLY CEMENT MORTAR ON ALL EXPOSED STEEL PER A.W.W.A. C205, "CEMENT-MORTAR PROTECTIVE LINING AND COATING FOR STEEL WATER PIPE-4 IN. (100 MM) AND LARGER-SHOP APPLIED".
- ⑤ APPLY PRIMER, WAX TAPE, COAT AND WRAP EXPOSED STEEL PER APPROVED MATERIAL LIST.
- ⑥ APPROVED TAPPING SLEEVE
- ⑦ A.S.A. 150 LB REDUCING, THREADED COMPANION FLANGE FOR AIR TESTING. SHALL BE REMOVED FOLLOWING AIR TEST, PRIOR TO INSTALLATION OF GATE VALVE.
- ⑧ GATE VALVE PER STD. 4005

NOTES:

- 1. FILLET WELDS SHALL BE PER A.W.W.A. C206, "FIELD WELDING OF STEEL WATER PIPE".
- 2. SIZE ON SIZE HOT TAPS ARE NOT ALLOWED. BRANCH SIZE MUST BE <=70% OF MAIN LINE DIAMETER. IF THIS CANNOT BE ACHIEVED, CONNECTIONS REQUIRE THE INSTALLATION OF A CUT IN TEE AND GATE VALVE ASSEMBLY AS APPROVED BY THE CITY.
- 3. THRUST BLOCKS REQUIRED PER STD. NO. 4004 EXCEPT FOR FULLY RESTRAINED PIPE.
- 4. NON-DESTRUCTIVE AIR TEST REQUIRED FOR WELDED NOZZLE AND FULL WRAPPER PRIOR TO INSTALLATION OF GATE VALVE. TEST PRESSURE SHALL BE 35-45 PSI. 45 PSI SHALL NOT BE EXCEEDED.
- 5. 3/4" DIAMETER CARBON STEEL BOLTS, NUTS, AND WASHERS A.S.T.M. 307, GRADE A OR B, ZINC PLATED SHALL BE USED. ZINC ANODE CAPS REQUIRED.



APPROVED BY:	<i>[Signature]</i>	05/30/2024		
		62809		
KHOI DO, CITY ENGINEER	RCE	DATE		
RECOMMENDED:	<i>[Signature]</i>	5/20/24		
		62268		
DENNIS MEJIA, UTILITIES ENG DIVISION MGR	RCE	DATE		
REV	DESCRIPTION	BY	APP'D	DATE

CITY OF ONTARIO

"HOT-TAP" DETAIL

STANDARD DRAWING NUMBER

4106