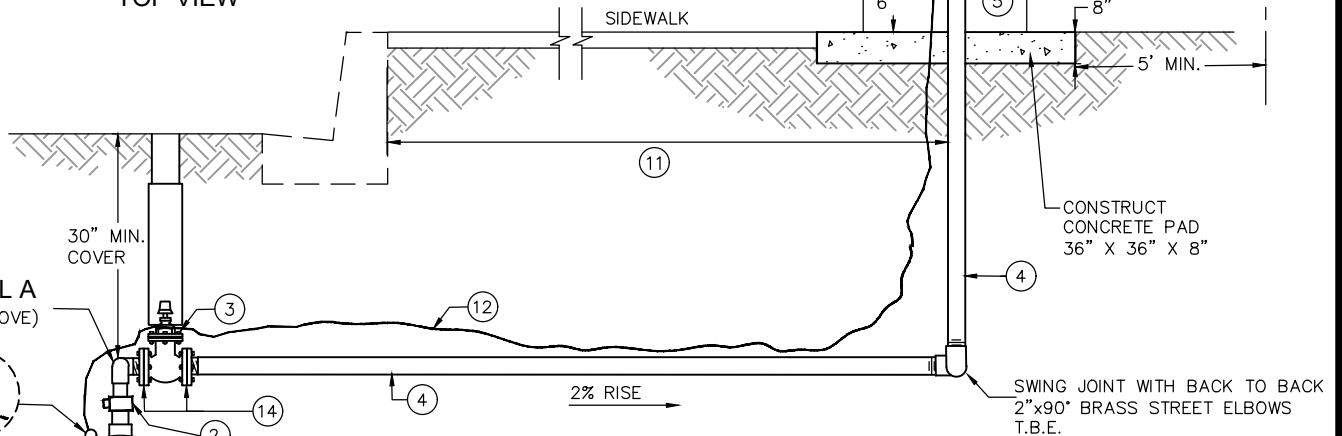


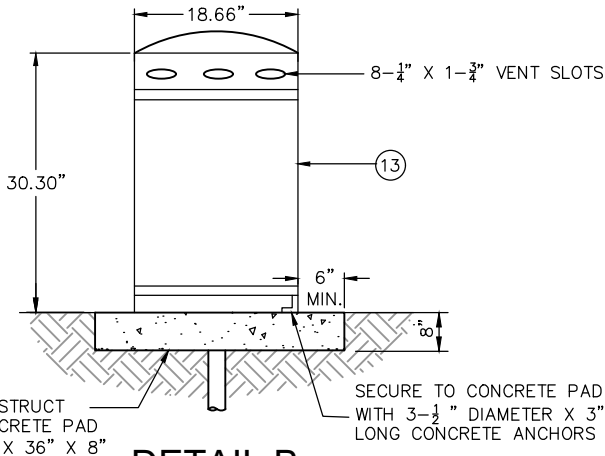
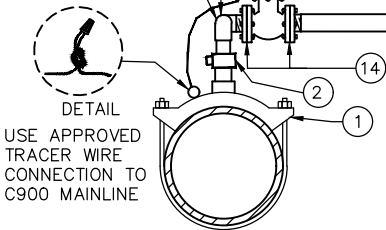
2" X 90° BRASS ELBOW T.B.E.
 SWING JOINT WITH BACK TO BACK STREET ELBOWS
 2" X 90° BRASS ELBOW T.B.E.

DETAIL A
 TOP VIEW



PROPERTY LINE OR P.U.L.E. OR RIGHT OF WAY

DETAIL A
 (SEE ABOVE)



DETAIL B
 ENCLOSURE

CONSTRUCTION NOTES:

- ① SIZE BY 2" DOUBLE BRONZE STRAP SADDLE FOR DIP OR C900. CMLC REQUIRES A WELDED 2" COUPLING PER STD. 4205.
- ② 2" CORP. STOP (M.I.P. X M.I.P.) OR (M.I.P. X F.I.P.)
- ③ 2" GATE VALVE PER STD. 4005
- ④ 2" RED BRASS IN PLASTIC SLEEVE
- ⑤ 2" CURB STOP
- ⑥ 2" BRASS CLOSE NIPPLE
- ⑦ AIR RELEASE AND VACUUM VALVE
- ⑧ 2" GALVANIZED NIPPLE
- ⑨ 2" STD. ELBOW
- ⑩ THREADED PRE-FABRICATED PVC SCREEN OUTLET WITH RIGID STAINLESS STEEL SCREEN
- ⑪ 18" BEHIND SIDEWALK WHEN SIDEWALK IS ADJACENT TO CURB, OR 18" BEHIND BACK OF CURB.
- ⑫ TRACER WIRE REQUIRED FOR C900 MAINS ONLY PER STD. 4212.
- ⑬ POLYETHYLENE ENCLOSURE WITH BOLT DOWN BASE AND INTEGRATED PADLOCK PLATE. COLOR SELECTION: POTABLE WATER, SANDSTONE OR TAN RECYCLED WATER, PURPLE
- ⑭ A.S.A. 150 LB REDUCING, THREADED COMPANION FLANGE.

NOTES:

- 1. SIZE OF UNIVERSAL AIR RELEASE VALVE ASSEMBLY SHALL BE DETERMINED BASED ON ENGINEERING CALCULATIONS. SIZE TO BE SHOWN ON PLANS.
- 2. LOCATION OF UNIVERSAL AIR RELEASE VALVE ASSEMBLY WILL BE DETERMINED BY THE CITY INSPECTOR AT THE TIME OF INSTALLATION.
- 3. ALL FITTINGS TO BE THREADED FROM CORP. STOP AT MAIN TO THE AIR RELEASE VALVE, EXCEPT FL X FL GATE VALVE.
- 4. 3/4" DIAMETER CARBON STEEL BOLTS, NUTS, AND WASHERS A.S.T.M. 307, GRADE A OR B, ZINC PLATED SHALL BE USED. ZINC ANODE CAPS REQUIRED.



APPROVED BY:	05/30/2024			
<i>[Signature]</i>	62809			
KHOI DO, CITY ENGINEER	RCE DATE			
RECOMMENDED:	5/20/24			
<i>[Signature]</i>	62268			
DENNIS MEJIA, UTILITIES ENG DIVISION MGR	RCE DATE			
REV	DESCRIPTION	BY	APP'D	DATE

CITY OF ONTARIO

2" AIR RELEASE AND VACUUM RELIEF VALVE ASSEMBLY (AIRVAC)

STANDARD DRAWING NUMBER
4102